



# CHAVESBAO

Lontana group

**GAMA DE SOLDADURA**  
GAMME DE SOUDAGE  
WELDING RANGE



**ELECTRODOS**  
ELECTRODES  
ELECTRODES



**ELECTRODOS DE ACERO AL CARBONO**  
ELECTRODES EN ACIER AU CARBONE  
CARBON STEEL ELECTRODES

**281110**  
GW SPARK 1.11 (E6013)



**286013**  
GW SPARK 1.6013 (E6013)  
Glöbal-weld blanco  
Glöbal-weld blanc  
Glöbal-weld white



**281501**  
GW SPARK 1.7024 (E7024)  
Glöbal-weld blanco / Glöbal-weld blanc  
Glöbal-weld white



**281160**  
GW SPARK 1.16 (E7016)



**281180**  
GW SPARK 1.18 (E7018)



**ELECTRODOS DE ACERO INOXIDABLE**  
ELECTRODES EN ACIER INOXYDABLE  
STAINLESS STEEL ELECTRODES

**280308**  
GW SPARK 1.308 (E308L-16) VAC-PAC  
Glöbal-weld blanco  
Glöbal-weld blanc  
Glöbal-weld white



**280316**  
GW SPARK 1.316 (E316L-16) VAC-PAC  
Glöbal-weld blanco  
Glöbal-weld blanc  
Glöbal-weld white



**281330**  
GW SPARK 1.33 (E307-16)



**281340**  
GW SPARK 1.34 (E309L-17)



**281360**  
GW SPARK 1.36 (E310-16)



**281320**  
GW SPARK 1.32 (E312-16)

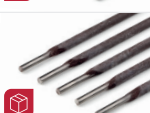


**ELECTRODOS DE ACERO FUNDIDO**  
ELECTRODES EN ACIER MOULÉ  
CAST STEEL ELECTRODES

**281400**  
GW SPARK 1.40 (ENi-C)  
Fundido / Fonte / Molten



**281410**  
GW SPARK 1.41 (ENiFe-Cl)  
Fundido / Fonte / Molten



**ELECTRODOS DE RECARGUE**  
ELECTRODES DE RECHARGEMENT  
HARDFACING ELECTRODES

**281500**  
GW SPARK 1.50 (E6-UM-60-GP)



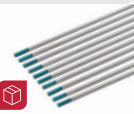
**ELECTRODOS DE ACERO CORTEN**  
ELECTRODES EN ACIER CORTEN  
CORTEN STEEL ELECTRODES

**287308**  
GW SPARK 1.8018  
Corten / Corten / Weathering Steel



**ELECTRODOS TUNGSTENO**  
ELECTRODES EN TUNGSTÈNE  
TUNGSTEN ELECTRODES

**229919**  
Electrodo Tungsteno TURQUESA WS2  
Électrode de tungstène TURQUOISE WS2  
Tungsten electrodes TURQUOISE WS2



**229922**  
Electrodo Tungsteno 2% CERIO GRIS  
Électrode de tungstène 2% CÉRIUM GRISÉ  
Tungsten electrode 2% CERIUM GREY



**229924**  
Electrodo Tungsteno puro VERDE  
Électrode de tungstène pur VERTE  
Pure tungsten electrodes GREEN



**229927**  
Electrodo Tungsteno NEGRO 1% LANTANO  
Électrode de tungstène 1% LANTHANE NOIR  
Tungsten electrodes 1% LANTHANUM BLACK



**229928**  
Electrodo Tungsteno ORO WL15  
Électrode tungstène OR WL15  
GOLD tungsten electrode WL15



**229930**  
Electrodo Tungsteno ROJO 2% TORIO  
Électrode de tungstène 2% THORIUM ROUGE  
Tungsten electrodes 2% THORIUM RED



**HILO MACIZO**  
FIL PLEIN  
SOLID WIRE



**HILOS DE ACERO AL CARBONO**  
FILS D'ACIER AU CARBONE  
CARBON STEEL WIRE

**45G2100**  
GW ROLLER 2.10 (G3Si1)  
S300 Hilo acero carbono  
S300 Fil en acier au carbone  
S300 Wire of carbon steel



**45G2110**  
GW ROLLER 2.11 (G3Si1)  
BS300 Hilo acero carbono  
BS300 Fil en acier au carbone  
BS300 Wire of carbon steel



**45H1252**  
(G3Si1)  
HILO SG2 S300 Hilo acero carbono  
FIL SG2 S300 Fil en acier au carbone  
WIRE SG2 S300 Wire of carbon steel



**45H1251**  
(G3Si1)  
HILO SG2 BS300 Hilo acero carbono  
FIL SG2 BS300 Fil en acier au carbone  
WIRE SG2 BS300 Wire of carbon steel



**45G2130**  
GW ROLLER 2.13 (G3Si1)  
Bidón, hilo acero carbono  
Bidon, Fil en acier au carbone  
Drum, Wire of carbon steel



**45H1261**  
HILO SG2 (G3Si1)  
Bidón, hilo acero carbono  
Bidon, Fil en acier au carbone  
Drum, Wire of carbon steel



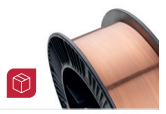
**45G2800**  
GW ROLLER 2.80 (G3Si1)  
S300 Copper free  
S300 Sans cuivre  
S300 Copper free



**45G2830**  
GW ROLLER 2.83 (G3Si1)  
Bidón Copper free  
Bidon fil sans cuivre  
Drum wire copper free



**45G2150**  
GW ROLLER 2.15 (G4Si1)  
S300 hilo acero carbono  
S300 Fil en acier au carbone  
S300 Wire of carbon steel



**45G2140**  
GW ROLLER 2.14 (G4Si1)  
Bidón, hilo acero carbono  
Bidon, Fil en acier au carbone  
Drum, Wire of carbon steel



**HILOS DE ACERO INOXIDABLE**  
FILS EN ACIER INOXYDABLE  
STAINLESS STEEL WIRES

**45G2300**  
GW ROLLER 2.30 (308LSi)



**45G2310**  
GW ROLLER 2.31 (316LSi)



**45G2320**  
GW ROLLER 2.32 (309LSi)



**45G2330**  
GW ROLLER 2.33 (307Si)



**45G2340**  
GW ROLLER 2.34 (310)



**45G2350**  
GW ROLLER 2.35 (312)



**45G2370**  
GW ROLLER 2.37 (ER2209)



**HILOS DE ACERO CORTEN**  
FILS D'ACIER CORTEN  
CORTEN STEEL WIRES

**45P0080**

HILO ER80S-G Hilo de acero corten  
FIL ER80S-G Fil en acier corten  
WIRE ER80S-G Weathering steel wire



**HILOS DE ACERO ALTO LÍMITE ELÁSTICO**  
FILS D'ACIER À HAUTE LIMITE D'ÉLASTICITÉ  
HIGH ELASTIC LIMIT STEEL WIRES

**45P1329**

HILO ER100S-G Hilo alto límite elástico  
FIL ER100S-G Fil à haute limite d'élasticité  
WIRE ER100S-G High elastic limit wire



**45P0069**

HILO ER110S-G Hilo alto límite elástico  
FIL ER110S-G Fil à haute limite d'élasticité  
WIRE ER110S-G High elastic limit wire



**HILOS DE COBRE ALEADO**  
FILS DE CUIVRE ALLIÉ  
ALLOYED COPPER WIRES

**45H1930**

HILO ERCuSi-A  
FIL ERCuSi-A  
WIRE ERCuSi-A



**45H1912**

HILO ERCu (CuSn1)  
FIL ERCu (CuSn1)  
WIRE ERCu (CuSn1)



**45H1941**

HILO ERCuAl-A1  
FIL ERCuAl-A1  
WIRE ERCuAl-A1



**HILOS DE ALUMINIO Y ALEACIONES**  
FILS EN ALUMINIUM ET ALLIAGES  
ALUMINIUM AND ALLOY WIRES

**45G2500**

HILO ER5356 Aluminio AlMg5  
FIL ER5356 Aluminium AlMg5  
WIRE ER5356 Aluminium AlMg5



**45G2510**

GW ROLLER 2.51 (ER4043) IIS300II  
Aluminio AlSi5  
Aluminium AlSi5 / Aluminium AlSi5



**45G2520**

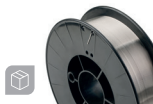
GW ROLLER 2.52 (ER5183) IIS300II  
Aluminio AlMg4,5Mn / Aluminium  
AlMg4,5Mn / Aluminium AlMg4,5Mn



**HILOS DE RECARGUE**  
FILS DE SURFAÇAGE  
SURFACING WIRES

**45P0600**

HILO MSG 6-60 Recargue o dureza  
FIL MSG 6-60 Recharge ou dureté  
WIRE MSG 6-60 Recharge or hardness



 **PACKAGING CHAVESBAO**

 **PACKAGING NEUTRO**  
EMBALLAGE NEUTRE / NEUTRAL PACKAGING

**HILOS TUBULARES**  
FIL FOURRÉ  
FLUX-CORED WIRE



**447105**

HILO E71T-5 Básico  
FIL E71T-5 Basique  
WIRE E71T-5 Basic



**45P1710**

HILO E70C-6M H4 Metal Cored  
FIL E70C-6M H4 Metal cored  
WIRE E70C-6M H4 Metal-cored



**447101**

HILO E71T-1C/1M Flux cored / Rutilo  
FIL E71T-1C/1M Fil fourré / Rutile  
WIRE E71T-1C/1M Flux cored / Rutile



**447111**

HILO E71T-11 Autoprotegido  
FIL E71T-11 Fil Sans gaz  
WIRE E71T-11 Self-shielded



**VARILLAS TIG**  
BAGUETTE TIG  
TIG ROD



**VARILLAS DE ACERO AL CARBONO Y DÉBILMENTE ALEADAS / BAGUETTES EN ACIER AU CARBONE ET FAIBLEMENT ALLIÉ**  
CARBON AND LOW ALLOY STEEL RODS

**473100**

GW STICK 3.10 (W3Si1)



**VARILLAS DE ACERO INOXIDABLE**  
BAGUETTES EN ACIER INOXYDABLE  
STAINLESS STEEL RODS

**473300**

GW STICK 3.30 (308LSi)



**473310**

GW STICK 3.31 (316LSi)



**473320**

GW STICK 3.32 (309LSi)



**VARILLAS DE ALEACIONES DE ALUMINIO**  
BAGUETTES EN ALLIAGE D'ALUMINIUM  
ALUMINIUM ALLOY RODS

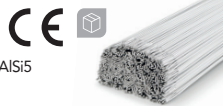
**675356**

VARILLA ER5356 Aluminio AlMg5  
BAGUETTE ER5356 Aluminium AlMg5  
ROD ER5356 Aluminium AlMg5



**674043**

VARILLA ER4043 Aluminio AlSi5  
BAGUETTE ER4043 Aluminium AlSi5  
ROD ER4043 Aluminium AlSi5



**674047**

VARILLA ER4047 Aluminio AlSi12  
BAGUETTE ER4043 Aluminium AlSi12  
ROD ER4043 Aluminium AlSi12



**VARILLAS DE ALEACIONES DE COBRE**  
BAGUETTES EN ALLIAGE DE CUIVRE  
COPPER ALLOY RODS

**671930**

VARILLA ERCuSi-A (Cobre)  
BAGUETTE ERCuSi-A (Cuivre)  
ROD ERCuSi-A (Copper)



**VARILLAS PARA SOLDADURA OXIGAS**  
BAGUETTES DE SOUDAGE OXYFUEL  
OXYFUEL WELDING RODS

**1057020**

VARILLA DE LATÓN  
BAGUETTES EN LAITON  
BRASS RODS



**1057019**

VARILLA DE LATÓN RECUBIERTA  
BAGUETTES EN LAITON ENROBÉE  
BRASS COATED RODS



**BACKING Y ACCESORIOS**  
BACKING ET ACCESSOIRES  
SUPPORT ENVERS AND ACCESSORIES



**8420000060**

BACKING REDONDO - 6 mm  
SUPPORT ENVERS ROND - 6 mm  
ROUND BACKING - 6 mm



**8420000090**

BACKING REDONDO - 9 mm  
SUPPORT ENVERS ROND - 9 mm  
ROUND BACKING - 9 mm



**8420000120**

BACKING REDONDO - 12 mm  
SUPPORT ENVERS ROND - 12 mm  
ROUND BACKING - 12 mm



**8420000150**

BACKING REDONDO - 15 mm  
SUPPORT ENVERS ROND - 15 mm  
ROUND BACKING - 15 mm



**84202709131**

BACKING MEDIA CAÑA - 9 mm  
SUPPORT ENVERS DEMI-ROND - 9 mm  
SEMI-OVAL BACKING - 9 mm



**84202713131**

BACKING MEDIA CAÑA - 13 mm  
SUPPORT ENVERS DEMI-ROND - 13 mm  
SEMI-OVAL BACKING - 13 mm



**84202709130**

BACKING PLANO - 9 mm  
SUPPORT ENVERS PLAT - 9 mm  
FLAT BACKING - 9 mm



**84202713130**

BACKING PLANO - 13 mm  
SUPPORT ENVERS PLAT - 13 mm  
FLAT BACKING - 13 mm



**72441196001**

CAMPANA O TOLVA. 250 kg diám. 50 cm  
CLOCHE OU TRÉMIE. 250 kg diam. 50 cm  
BELL OR HOPPER. 250 kg diam. 50 cm



**Chaves Bilbao S.L.**

Bizkargi, 6 (Pol. Ind. Sarrikola)  
48195 - Larrabetzu (Bizkaia) - SPAIN  
T.: + 34 944 123 456  
comercial@chavesbao.com  
www.chavesbao.com

**ALMACÉN:**

Pol. Ind. Trapaga-Ugarte, manzana 12-C  
48510 - Trapaga (Bizkaia) - SPAIN

